

Honeywell

Doorbells





Contents



Introduction

About us

Live well with Honeywell 04

Feature and Benefits

Life in harmony with Honeywell doorbells 06

Kit Options

Enjoy total peace of mind with a Honeywell doorbell kit 10

Products

Series 9 11

Series 5 14

Series 3 18

Pushes and Accessories 21

Comparison Tables

Product Comparison Tables 23

Live well with Honeywell



Honeywell is a world leading provider of innovative technology for the home. Our doorbells and home alarm systems are designed to be revolutionary for a reason, to provide homes and families with the perfect balance of comfort, control and peace of mind.

Honeywell was established in 1885, and for the last 130 years we've driven our business forward to greater heights through innovations and a desire to improve lives. Homes and families are at the heart of everything we create. We truly believe that Honeywell products will make a family's life easier, taking away those little stresses and difficulties so people can get on with living well.

Of course, if you want to make people's lives easier then reliability must go hand-in-hand with innovation. You can't rely on products that don't perform to standard. Like our company, our components can weather the test of time; it's important to us that our products are robust enough to withstand the rigours of daily life, as well as improve it. Reliability, quality and excellence are our watchwords, backed up by our 2 year guarantee, a promise we proudly uphold for all our customers.



Life in **harmony** with **Honeywell** doorbells

Honeywell doorbells represent the next generation in technology for the home – doorbells that not only adapt to suit your home, but have the capability to grow with your family as needs and habits evolve.

By taking Friedland's 60 year heritage of creating the best doorbells in the world, and adding Honeywell's expertise and track record in innovation, we've designed a range of truly revolutionary doorbells from the ground up that are not only stunning and incredibly reliable, but also completely change the definition of what a doorbell is capable of.

Honeywell doorbells are different because of their intuitive design and flexibility. They grow with your family, adapting to your home and lifestyle through a range of clever, customisable features so you're always able to control how you use them.

Never miss a visitor or delivery

- Portable doorbells can be taken with you anywhere around the home and garden
- Wireless range of up to 200m means your doorbell will always work, wherever you place it
- Link two doorbells together to boost the wireless range from 200m up to 400m



Disturbance free

- Sleep mode mutes the sound for 3, 6, 9 or 12 hours, so you can relax free of any disturbance
- Use Mute mode to silence the doorbell until you turn the sound back on again
- Easily adjust the volume to suit your family or mood



Mute



3hr



6hr



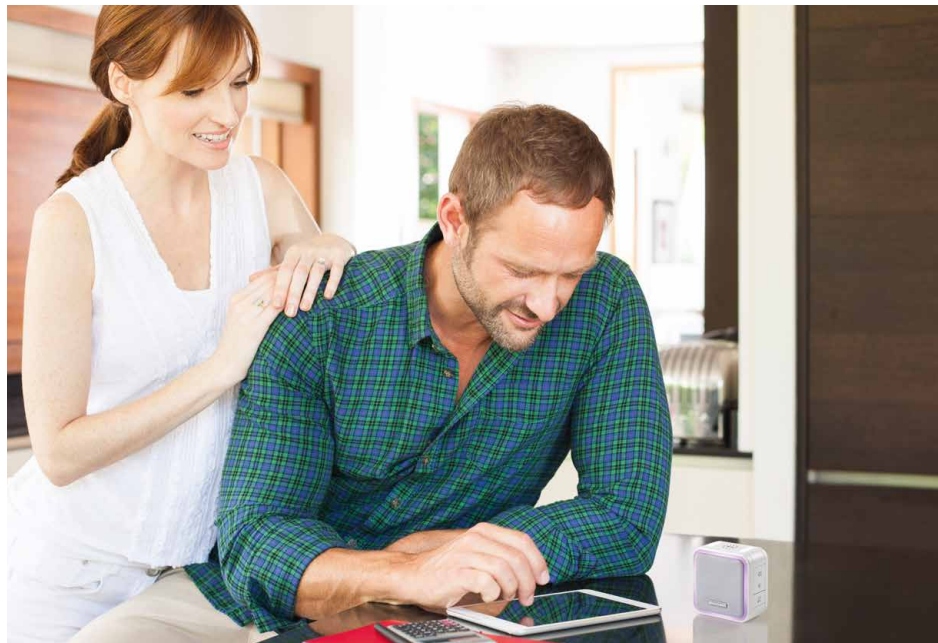
9hr



12hr

Visual alerts

- The unique Halo Light and LED Strobe features provide visual alerts – great in loud environments, when sleep or mute mode is activated and for the hearing-impaired.
- Nightlight mode guides your way in the dark with a soft comforting glow



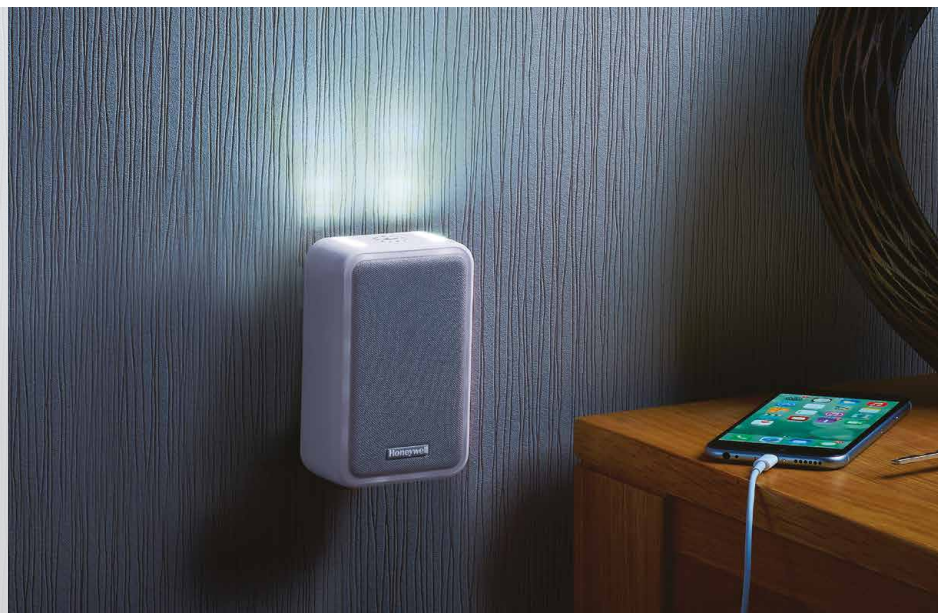
Compact size, rich sound

- Crystal clear sound quality that can be heard throughout the home and garden
- A maximum volume of 90dB gives an audible range of up to 100m
- Choose from up to 8 melodies
- Customise with your own melodies



Revolutionary design

- Compact size and stunning design seamlessly fits in with your décor
- Neutral colours of white and grey complement any room
- Next generation in technology for the home doorbells that not only adapts to suit your home; but have the capability to grow with your family as needs and habits evolve





Peace of mind

- LED confidence light clearly indicates that your doorbell push is working
- Press three times quickly, and our Secret Knock function plays a different melody, so you know if it's a family member or friend at the door.

Reliability and quality

- Honeywell ActivLink™, using the 916.8MHz frequency, is our innovative wireless protocol which delivers 20% wider range, 20% improved battery life and a consistent connection with no interference, making these doorbells our most efficient and reliable yet!

- Up to 5 years battery life, for peace of mind
- 2 year product guarantee

Easy to install and use

- Pre-linked and ready to go out of the box
- Easy optional screw-free installation
- Easy open battery compartment



Enjoy total peace of mind with a Honeywell doorbell kit

Convenient, simple and easy to install, these pre-linked Honeywell doorbell kits provide the perfect doorbell solution for your home. Whether it's alerting you to visitors before they've even reached your front door, or warning you that someone is attempting to enter or leave your home, these kits will keep your family aware and alert. Supported by Honeywell ActivLink™ Technology for improved reliability and range, these clever kits will ensure you never miss a visitor again.

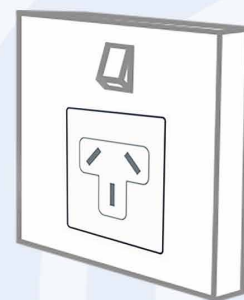
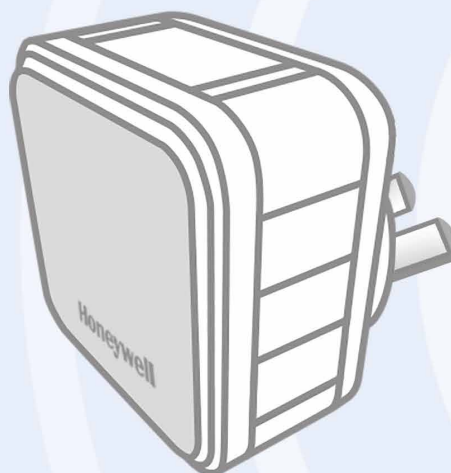


Portable Doorbells

Portable doorbells have an outstanding range, meaning you can take them with you around the home and garden so you'll never miss a visitor or delivery again.

Plug-in Doorbells

Plug-in doorbells are always powered and ready to go. Our range features such benefits as our innovative nightlight mode.



Series 9

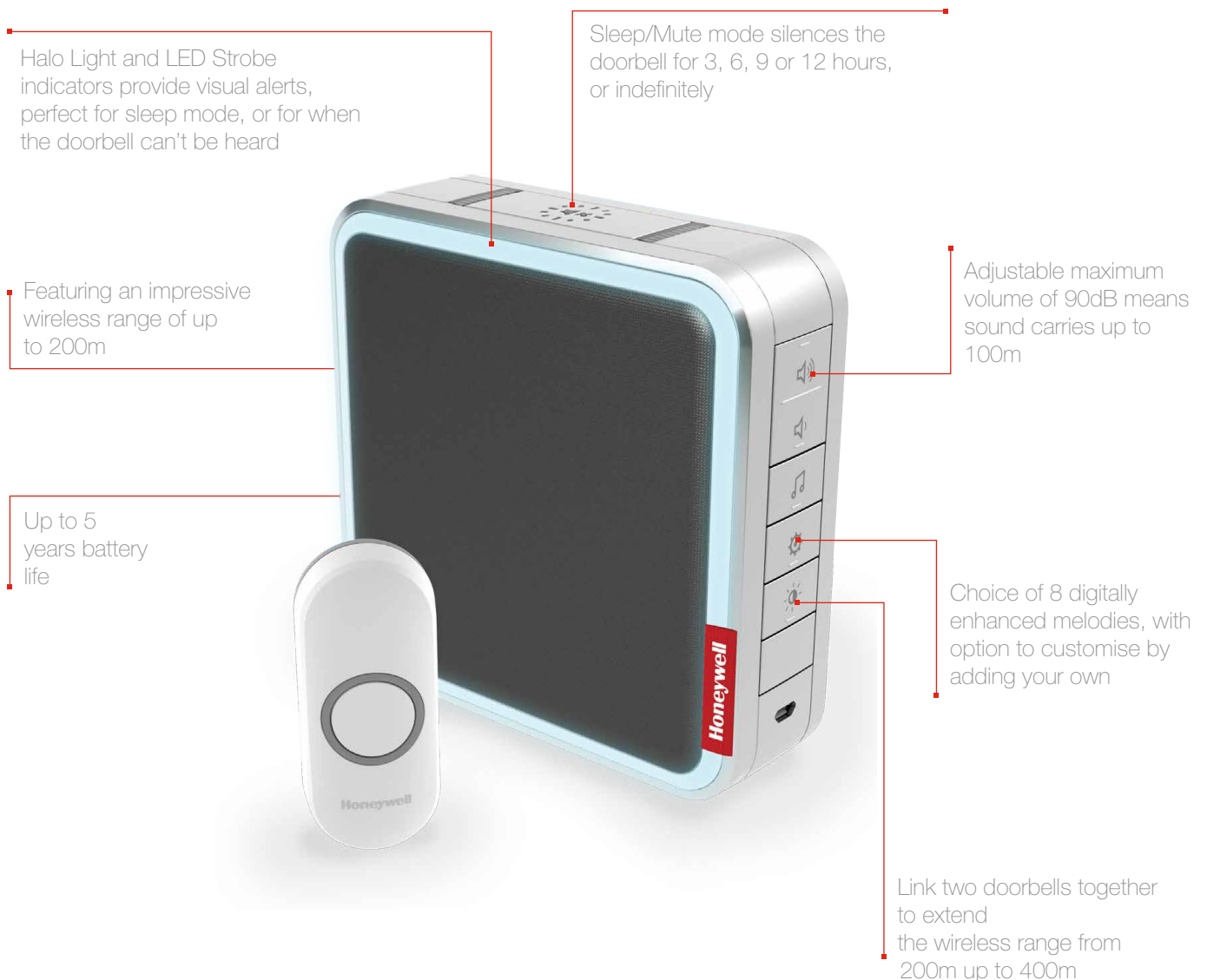


flexible exceptional
beautifully designed

Series 9 represents the very best of Honeywell's doorbells that have been designed to work in perfect harmony with family homes and busy lifestyles. Portable, versatile and innovative, they grow with your family and adapt to suit your lifestyle.

Featuring Honeywell ActivLink™ technology, these doorbells boast an impressive 200m wireless range, meaning they can be carried throughout the home and garden and still let you know when there's a visitor at the door. ActivLink also enables our doorbells to link with our Home Alarm products, such as Door and Window Sensors or Wireless Motion Sensors to create simple early alert and door entry systems for added peace of mind.

Simple to set up and install, Honeywell Series 9 doorbells are pre-linked and ready to go from the moment of purchase, with nothing more to worry about thanks to a 5 year battery life, and a 2 year product guarantee.



DC917NGA

Wireless portable MP3 doorbell with range extender, customisable melodies and push button – Grey



- Up to 200m wireless range
- Digitally enhanced sound with volume control
- Maximum volume of 90dB carries up to 100m
- Choice of 8 melodies, with melody customisation
- Sleep/Mute mode
- Halo Light and LED Strobe provide visual alerts
- Up to 5 years battery life
- Range extender widens wireless range up to 400m
- Easy installation – no wiring required
- Fixings included

Doorbell (grey):
Dimensions: 126 x 126 x 41.8mm
Batteries:
4 x LR14 (C) 1.5V
(not included)

Push Button (white):
Dimensions: 30 x 70 x 16mm
Batteries:
1 x CR2032 (3V)
(included)



Unit Barcode:
5004100968197

Series 5

stylish compact
designer doorbells



Series 5 doorbells are, quite simply, style personified. Designed to be compact and chic, but packed with amazing features, their sleek design allows them to blend seamlessly into any home.

Featuring portable doorbells for those families who need flexibility, and plug-in kits suited to active households who want to fit and forget, there's a Series 5 doorbell to suit every home, from busy couples to young families, and everyone in between.

Simple to install and set-up to work straight out of the box, all our Series 5 doorbells benefit from Honeywell ActivLink™ technology, which provides incredibly reliable wireless connectivity and improved battery life of up to 2 years, all supported by our 2 year product guarantee.



<p>DC515NA</p>	<p>Wireless portable doorbell with halo light, sleep mode and push button – White</p>	
	<ul style="list-style-type: none"> • Compact design • Up to 150m wireless range • Digitally enhanced sound with volume control • Maximum volume of 84dB carries up to 80m • Choice of 6 melodies • Sleep/Mute mode • Halo Light and LED Strobe provide visual alerts • Up to 2 years battery life • Easy installation – no wiring required • Fixings included 	<p>Doorbell (white): Dimensions: 70 x 70 x 42.5mm Batteries: 3 x LR6 (AA) 1.5V (not included)</p> <p>Push Button (white): Dimensions: 30 x 70 x 16mm Batteries: 1 x CR2032 (3V) (included)</p>
		<p>Unit Barcode: 5004100968227</p>

<p>DC515NGA</p>	<p>Wireless portable doorbell with halo light, sleep mode and push button – Grey</p>	
	<ul style="list-style-type: none"> • Compact design • Up to 150m wireless range • Digitally enhanced sound with volume control • Maximum volume of 84dB carries up to 80m • Choice of 6 melodies • Sleep/Mute mode • Halo Light and LED Strobe provide visual alerts • Up to 2 years battery life • Easy installation – no wiring required • Fixings included 	<p>Doorbell (grey): Dimensions: 70 x 70 x 42.5mm Batteries: 3 x LR6 (AA) 1.5V (not included)</p> <p>Push Button (white): Dimensions: 30 x 70 x 16mm Batteries: 1 x CR2032 (3V) (included)</p>
		<p>Unit Barcode: 5004100968234</p>

<p>DC515NP2A</p>	<p>Wireless plug-in doorbell with sleep mode, nightlight and push button – White</p>	
	<ul style="list-style-type: none"> • Compact design • Up to 150m wireless range • Digitally enhanced sound with volume control • Maximum volume of 84dB carries up to 80m • Choice of 6 melodies • Sleep/Mute mode • Halo Light and LED Strobe provide visual alerts • Nightlight mode • Easy installation – no wiring required • Fixings included 	<p>Doorbell (white): Dimensions: 70 x 70 x 66mm Power: 100-240V 50-60Hz 300mA</p> <p>Push Button (white): Dimensions: 30 x 70 x 16mm Batteries: 1 x CR2032 (3V) (included)</p>
		<p>Unit Barcode: 5004100968258</p>

DC515NGP2A

Wireless plug-in doorbell with sleep mode, nightlight and push button – Grey



- Compact design
- Up to 150m wireless range
- Digitally enhanced sound with volume control
- Maximum volume of 84dB carries up to 80m
- Choice of 6 melodies
- Sleep/Mute mode
- Halo Light and LED Strobe provide visual alerts
- Nightlight mode
- Easy installation – no wiring required
- Fixings included

Doorbell (grey):
Dimensions: 70 x 70 x 66mm
Power:
100-240V 50-60Hz 300mA

Push Button (white):
Dimensions: 30 x 70 x 16mm
Batteries:
1 x CR2032 (3V)
(included)



Unit Barcode:
5004100968241

Series 3

simple

versatile

reliable



Series 3 features the best in simple and efficient doorbell kits. A Series 3 doorbell will provide everything you're looking for, plus that little bit more, with features you won't expect but soon can't live without.



Series 3 doorbells are designed to be simple, reliable and hassle-free. Thanks to Honeywell ActivLink™, they come pre-linked and ready to go straight out of the box, with uncomplicated, screw-free installation that means you can be ready to go in minutes. They even feature easy-open battery compartments, for complete ease of use.

Available in both portable and plug-in models, these Series 3 doorbells are just what you've been looking for, providing outstanding sound quality, reliable wireless connectivity and a 2 year product guarantee so you can simply fit, and forget.



<p>DC313NA</p>	<p>Wireless portable doorbell with volume control and push button – White</p>	
	<ul style="list-style-type: none"> • Up to 150m wireless range • Digitally enhanced sound with volume control • Maximum volume of 84dB carries up to 80m • Choice of 6 melodies • LED Strobe provides visual alerts • Up to 2 years battery life • Easy installation – no wiring required • Fixings included 	<p>Doorbell (white): Dimensions: 110 x 70 x 42.5mm Batteries: 4 x LR6 (AA) 1.5V (not included)</p> <p>Push Button (white): Dimensions: 30 x 70 x 16mm Batteries: 1 x CR2032 (3V) (included)</p>
		<p>Unit Barcode: 5004100968203</p>

<p>DC313NGA</p>	<p>Wireless portable doorbell with volume control and push button – Grey</p>	
	<ul style="list-style-type: none"> • Up to 150m wireless range • Digitally enhanced sound with volume control • Maximum volume of 84dB carries up to 80m • Choice of 6 melodies • LED Strobe provides visual alerts • Up to 2 years battery life • Easy installation – no wiring required • Fixings included 	<p>Doorbell (grey): Dimensions: 110 x 70 x 42.5mm Batteries: 4 x LR6 (AA) 1.5V (not included)</p> <p>Push Button (white): Dimensions: 30 x 70 x 16mm Batteries: 1 x CR2032 (3V) (included)</p>
		<p>Unit Barcode: 5004100968210</p>

<p>DW311S</p>	<p>Wired doorbell – White</p>	
	<ul style="list-style-type: none"> • Wired Doorbell Replacement Kit • Digitally enhanced sound • Maximum volume of 80dB carries up to 60m • Choice of 4 melodies • Up to 2 years battery life • Mains power option via transformer • Easy installation – push fit connectors • Fixings included 	<p>Doorbell (white): Dimensions: 110 x 70 x 42.5mm Batteries: 4 x LR6 (AA) 1.5V (not included)</p>
		<p>Unit Barcode: 5004100965691</p>



Pushes and accessories



Honeywell door pushes are the best on the market, teaming great functionality with a best in class design. All come with a LED confidence light, and our innovative security feature called Secret Knock, which plays an alternative melody when the button is pushed three times in quick succession, letting residents know that it's family or friends at the door.

For total peace of mind, add an accessory product to your doorbell, creating your own Doorbell Alert System.

All pushes and accessories feature Honeywell ActivLink™ technology, which delivers a wider range capability, improved battery life, and a consistent connection that's immune to signal interference, making them the most efficient and reliable on the market.

DCP311GA	Wireless push button with LED confidence light – Portrait, Grey	
	<ul style="list-style-type: none"> • Up to 200m wireless range • LED Confidence light • Secret Knock function • Easy open battery compartment • Up to 2 years battery life • Low battery indicator • Waterproof (IP55) • Easy installation – no wiring required • Fixings included 	Push Button (grey): Dimensions: 30 x 70 x 16mm Batteries: 1 x CR2032 (3V) (included)
		Unit Barcode: 5004100968265

DCP511A	Wireless push button with nameplate and LED confidence light – Offset Landscape, White	
	<ul style="list-style-type: none"> • Up to 200m wireless range • Push name plate • LED Confidence light • Secret Knock function • Easy open battery compartment • Up to 2 years battery life • Low battery indicator • Waterproof (IP55) • Easy installation – no wiring required • Fixings included 	Push Button (white): Dimensions: 30 x 70 x 16mm Batteries: 1 x CR2032 (3V) (included)
		Unit Barcode: 5004100968272

DCP511GA	Wireless push button with nameplate and LED confidence light – Offset Landscape, Grey	
	<ul style="list-style-type: none"> • Up to 200m wireless range • Push name plate • LED Confidence light • Secret Knock function • Easy open battery compartment • Up to 2 years battery life • Low battery indicator • Waterproof (IP55) • Easy installation – no wiring required • Fixings included 	Push Button (Grey): Dimensions: 30 x 70 x 16mm Batteries: 1 x CR2032 (3V) (included)
		Unit Barcode: 5004100968289

Product comparison table

SERIES 9

Model / Colour		Portability		Wireless / Wired				Sound					Visual Alerts			Power		Contents							
Model	Colour	Portable	Plug-In	Wireless	Wired	Wireless range (m)	Range extender	Audible range (m)	Audible volume (dB)	Melodies	Melody customisation	Volume control	Sleep/Mute mode	8 Colour Halo Light	LED Strobe	Nightlight	Battery life (years)	Mains power via micro USB	Wireless push button	Portable doorbell	Plug-In doorbell	Wired or wired/wireless doorbell	Wireless motion sensor (IP54)	Wireless door/window sensor	Wired to wireless converter
DC917NGA	Grey	•		•		200	•	100	90	8	•	•	•	•	•		5	•	1	1					

SERIES 5

Model / Colour		Portability		Wireless / Wired				Sound					Visual Alerts			Power		Contents							
Model	Colour	Portable	Plug-In	Wireless	Wired	Wireless range (m)	Range extender	Audible range (m)	Audible volume (dB)	Melodies	Melody customisation	Volume control	Sleep/Mute mode	8 Colour Halo Light	LED Strobe	Nightlight	Battery life (years)	Mains powered via micro USB	Wireless push button	Portable doorbell	Plug-In doorbell	Wired or wired/wireless doorbell	Wireless motion sensor (IP54)	Wireless door/window sensor	Wired to wireless converter
DC515NA	White	•		•		150		80	84	6		•	•	•	•		2		1	1					
DC515NGA	Grey	•		•		150		80	84	6		•	•	•	•		2		1	1					
DC515NP2A	White		•	•		150		80	84	6		•	•	•	•	•			1		1				
DC515NGP2A	Grey		•	•		150		80	84	6		•	•	•	•	•			1		1				

SERIES 3

Model / Colour		Portability		Wireless / Wired				Sound					Visual Alerts			Power		Contents							
Model	Colour	Portable	Plug-In	Wireless	Wired	Wireless range (m)	Range extender	Audible range (m)	Audible volume (dB)	Melodies	Melody customisation	Volume control	Sleep/Mute mode	8 Colour Halo Light	LED Strobe	Nightlight	Battery life (years)	Mains powered via micro USB	Wireless push button	Portable doorbell	Plug-In doorbell	Wired or wired/wireless doorbell	Wireless motion sensor (IP54)	Wireless door/window sensor	Wired to wireless converter
DC313NA	White	•		•		150		80	84	6		•		•	•		2		1	1					
DC313NGA	Grey	•		•		150		80	84	6		•		•	•		2		1	1					
DW311S	White			•				60	80	4							2					1			

For more information

www.livewell.honeywell.com

Honeywell Environmental & Energy Solutions

Level 3, 2 Richardson Place

North Ryde

NSW 2113

Australia

Customer Service 1300 363 936

www.honeywell.com

ECCBR-CHIMES-AUEN | APR 2016
© 2016 Honeywell International Inc.

Honeywell